

Enabling lifelong learning through Communities of Practice

NE VICTORIA ADULT AUTISM SPECTRUM PROJECT

Presented by Meredith Lane, Project Manager-Gateway Health
meredith.lane@gatewayhealth.org.au

The regional experience

The NDIS is a market-based model of service delivery.

Other providers are our competitors – or are they?

Barriers to service delivery

- Limited services
- Limited access to specialised services
- Lack of knowledge and confidence of clinicians to work with adult cohort
- Lack of Specialist Behavioural Support practitioners



Silos don't work for clinicians!



CLINICIANS

Sharing solutions

Identifying issues

Sharing resources

Other C of P's

Exploring issues together

Fostering enquiry

Community of Practice

Subject matter experts

Clinical supervision

Problem:

Participants identified clients who had been prescribed psychotropic medication as children/adolescents who had not been reviewed by a psychiatrist in some time.

The clinicians asked:

“Whose role is the management and review of individuals in this situation?”

“What is the role of clinicians in this situation?”

COMMUNITY OF PRACTICE

how does it support learning?



Responsive:

The Community of Practice is responsive to the specific needs of the communities in which clinicians work.

Supportive:

The Community of Practice provides an environment for clinicians to explore areas of need, to build on existing skills, to access networks, and to develop a bank of resources.

Collaborative:

Clinicians work together to identify solutions and share ideas.

Learnings from the Community of Practice are shared with workplace colleagues to enhance and extend the reach of the community of practice.

Project Outcomes

For clinicians:

- Increased knowledge and understanding of the needs of adults with autism accessing the NDIS in NE Victoria.
- Increased knowledge and skills in assessment and identification of the needs of adults with autism accessing the NDIS in NE Victoria.
- Increased knowledge and skills in supporting the goals of adults with autism accessing the NDIS in NE Victoria.

Project Outcomes

For adults with Autism in our region:

- Increased service provision of AH services
- Increased quality of service provision
- Increased knowledge of providers of support to adults with autism
- Continuity of care – service providers confident to support clients through life stages

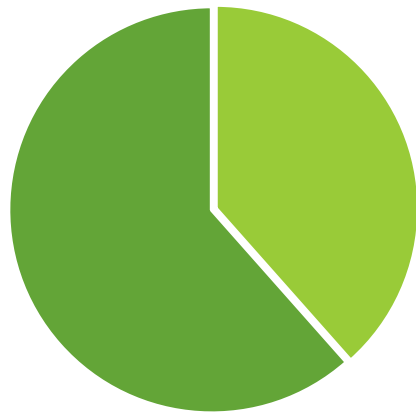
What Did We Do?

- 16 participants from six service providers
- 1 two-day workshop delivered by Aspect
- Development of Individual Learning Needs Analyses
- 3 clinical supervisors – subject matter experts
- 10 monthly Community of Practice zoom catch-ups
- Ongoing 1:1 clinical supervision

Outcomes

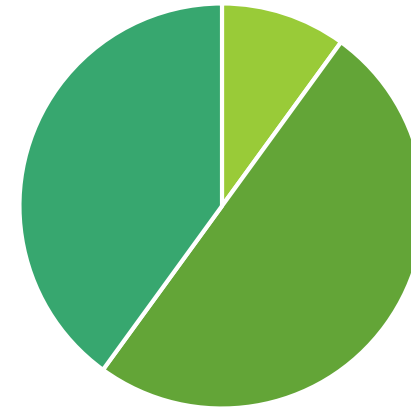
Consider alternative methods of goal setting for adult clients with Autism

Start of project



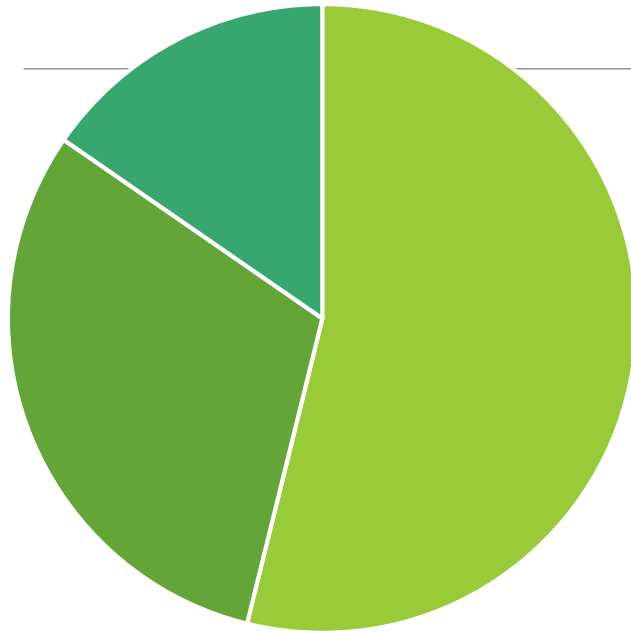
■ 1 ■ 2 ■ 3 ■

Mid- project



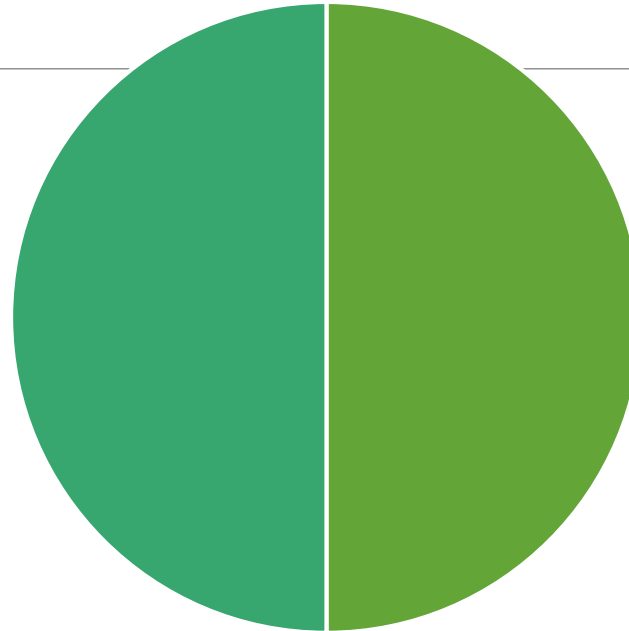
■ 1 ■ 2 ■ 3 ■

Start of Project



■ 1 ■ 2 ■ 3 ■

Mid project



■ 1 ■ 2 ■ 3 ■

Use/apply principles of Positive Behaviour Support with adult clients with Autism

Participant feedback

'I have really enjoyed using this as a part of my everyday practice, and find that it has been a positive aspect of my intervention.'

'The training has provided me with a means to structure my approach when working with both paediatric and adult clients. Learning this information now has been helped me capacity build those supporting paed clients across settings.'

'Feel quite confident with this now and possibly just need more practice and exposure with using resources and knowledge I have gained.'

Covid-19

Did not impact on:

- Workshop delivery
- Community of Practice

Has impacted on:

- opportunities to use resources and acquired knowledge
- full engagement of the Community of Practice
- Participants' capacity to engage with clinical supervision

Impacts continued...

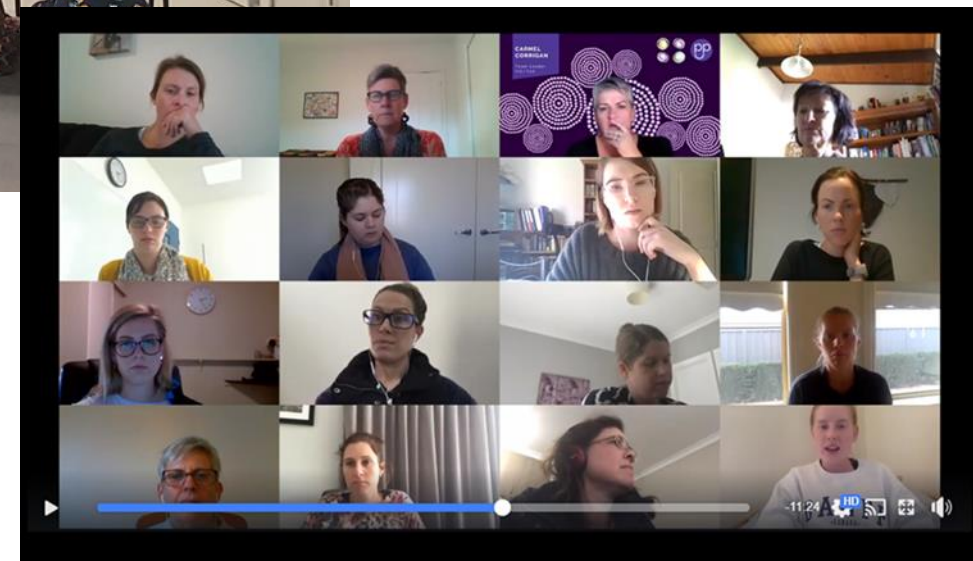
Will impact on:

- an increase in the number of providers delivering services to adults with autism in the near future.



gatewayhealth

Successes-



Next steps...

- Ensuring sustainability of the Community of Practice
- Developing a resource for participants and families to access to identify services and resources to support them
- A register for service providers/clinicians across the region to identify clinical supports and/or appropriate referral options
- Identifying further research/project opportunities

Acknowledgements

Consortium members:

- Icaria Health
- SCOPE
- NECAMHS
- Aspire
- Gateway Health

North East Adult Autism Community of Practice members

Clinical supervisors: Glenys Salter- Aspire, Karen Williams, Nat Hamam- Real World Therapy

Workforce Innovator Connector: Kathy Barakis

CONTACT:

email: meredith.lane@gatewayhealth.org.au

Phone: 03 57 232 031